



# PARQUE CIDADES DO TEJO



# CONTEXT

**2,870,208 Inhabitants<sup>1</sup>**

**28% of the national population**

**48% active population**

**26% aged 25 – 44**

**1.7% population growth from 2011 to 2023**

**7% projected population growth by 2080<sup>2</sup>**

1. INE, 2021 Census

2. INE, Resident population projections, update as of March 31, 2020





A great **metropolis**.

Two **banks**, centered on the Tagus.

Four projects of **national interest**.

Eighteen **Municipalities**.

A **unique operation**.

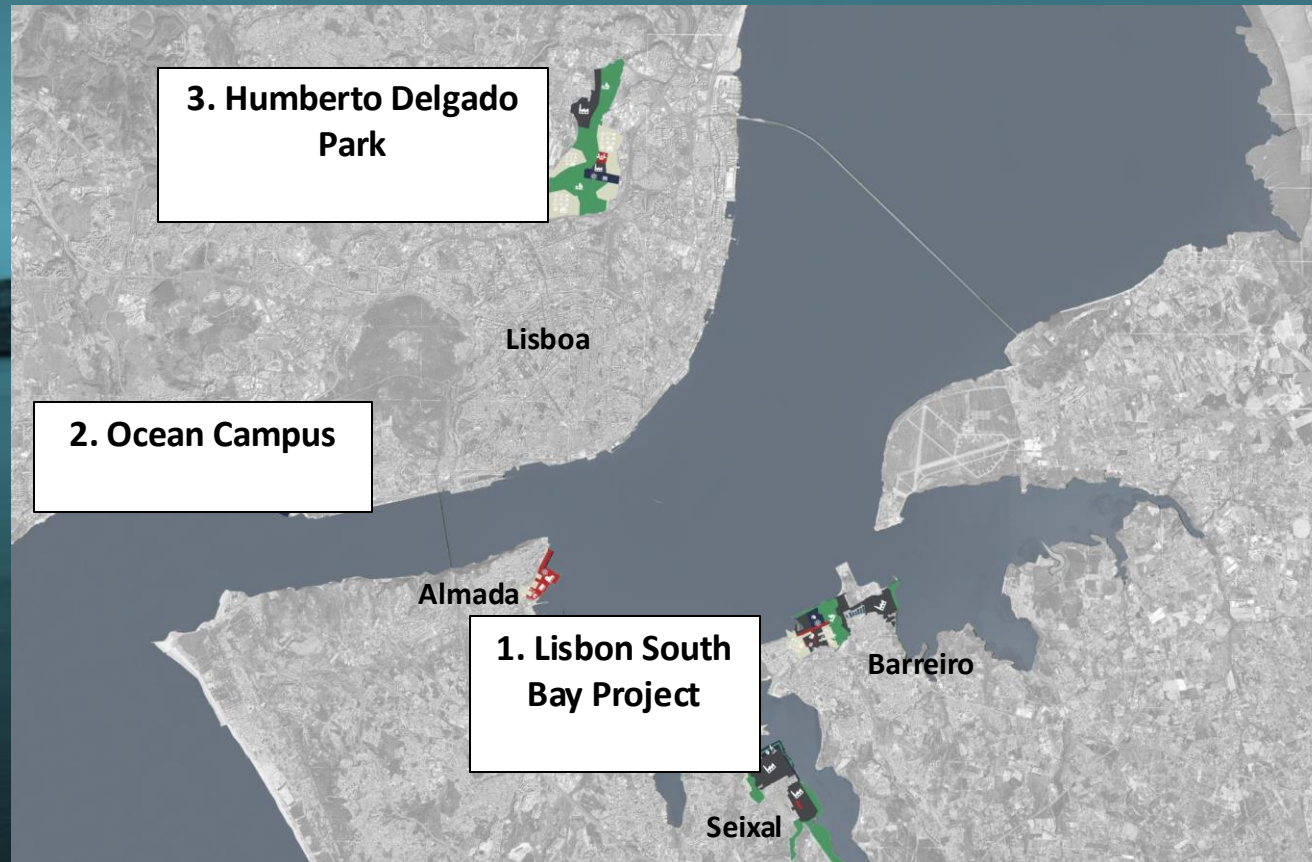
With **centralized coordination**.

A **priority intervention**, of high **national relevance**.

Where the Central Government and  
Municipalities cooperate.

# New urban development projects in Lisbon

~2.500M€ investments for Lisbon area



10,86 km<sup>2</sup>



540 hectares of green spaces  
25.000 homes  
43 schools  
10 culture facilities



# Housing: Lisbon South Bay Project

## Environment



200ha contaminated soils  
Total remediation until 2027

## Mobility



40 km Walking + Cycling + Transport promenade  
2 bridges  
5 river ports

## Cohesion

### ALMADA

58ha | 2,3km riverfront  
159 M€ in urbanization  
590.000m<sup>2</sup> new buildings

### SEIXAL

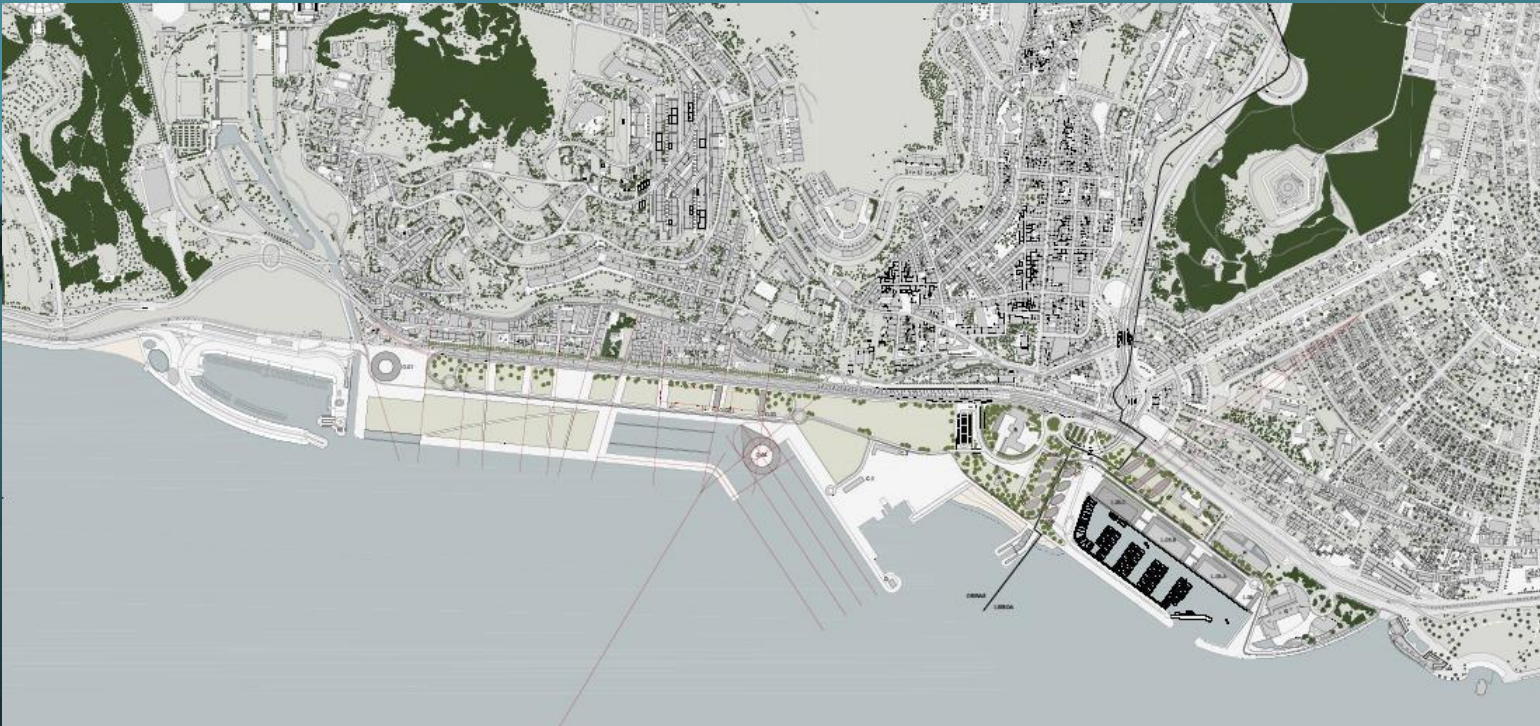
247ha | 2,3km riverfront  
265M€ in urbanization  
1M m<sup>2</sup> new buildings

### BARREIRO

214ha | 7,5km riverfront  
515M€ in urbanization  
2,2M m<sup>2</sup> new buildings

# Ocean Campus

Research and Development Cluster for the sea



**90 hectares**

**128 hectares of green spaces**

**Startup incubator**

**Research institutions for health,  
climate and AI**

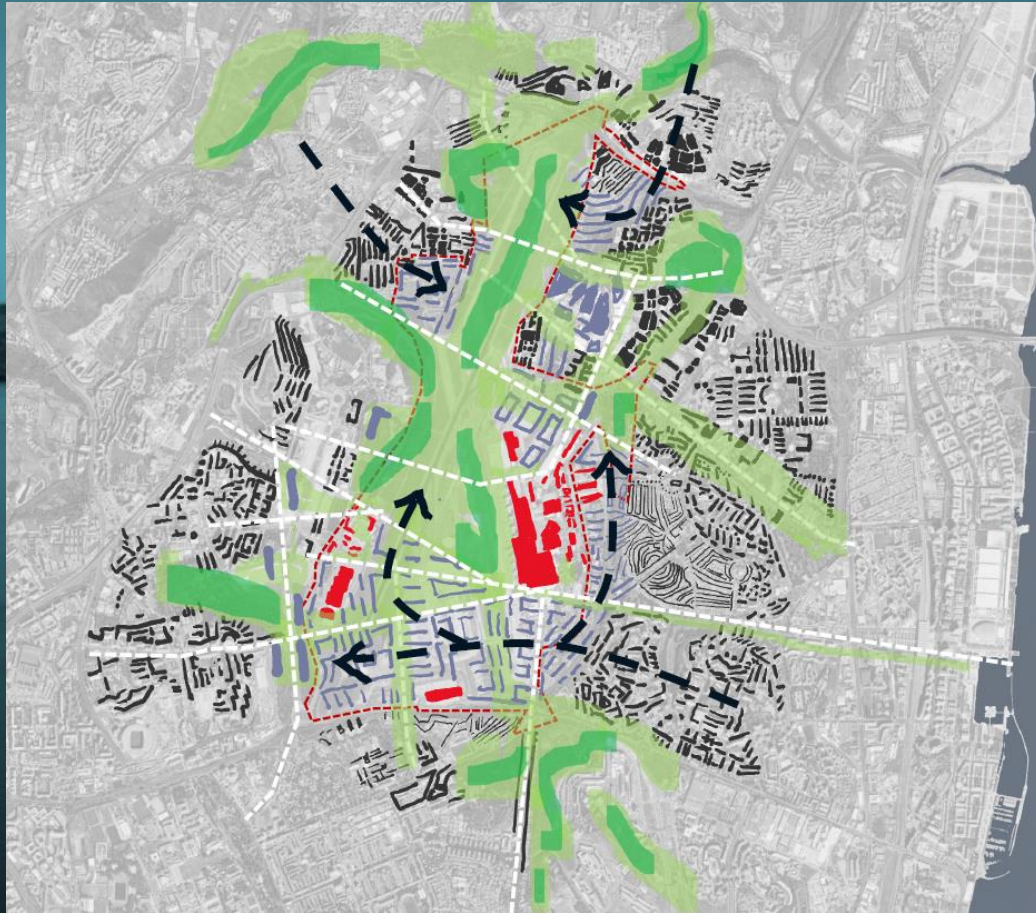
**2 Marinas**

**Exhibition and congress center**



# Humberto Delgado Park

In the location of the current Humberto Delgado Airport



**441 hectares** of public domain

**128 hectares** of green spaces

**100.000 m<sup>2</sup>** new congress center

**6.200** houses

**Decontamination and infrastructure  
development operations**

**Housing, commerce, service and public facilities  
construction**